



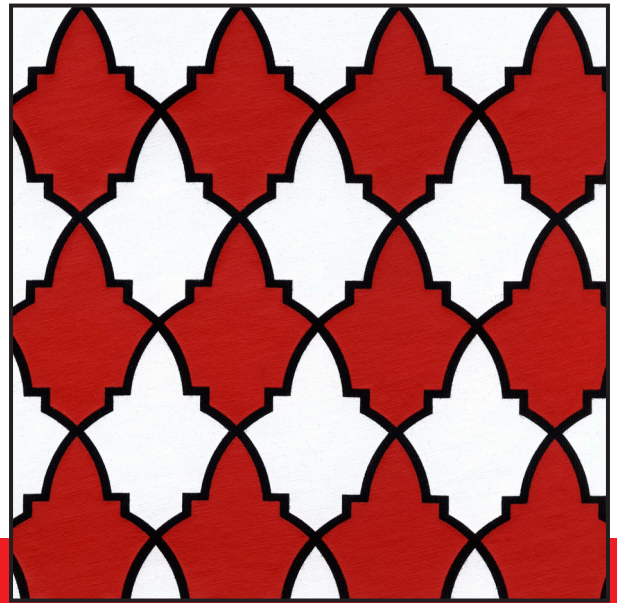
# HYDRA

**Hydra Cool Base** A semi-opaque Base was missing in order to complete the already extraordinary well known performances of Hydra range.

Hydra Cool Base is more opaque and has a greater matt finishing nevertheless is perfectly compatible with the formulae proposed by Virus Mixing System.

Hydra Cool Base ensures vibrant bright colors, the same achievable with a transparent base.

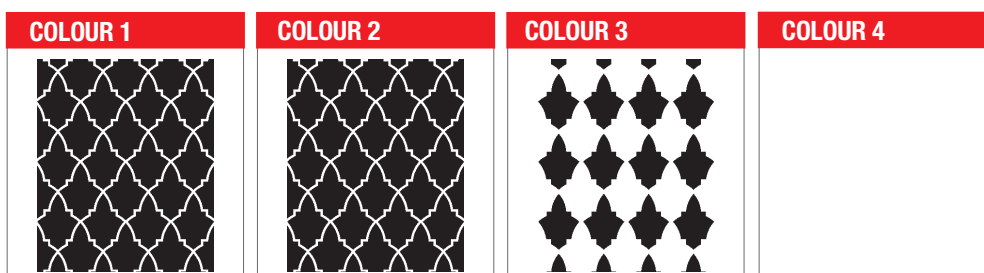
# HYDRA COOL BASE



## technical sheet

COLOUR 1 - RECIPE	RATIO	SCREEN	COLOUR 2 - RECIPE	RATIO	SCREEN
HYDRA WHITE 120 E	100	120/305	HYDRA WHITE 120 E	100	48/123
		GEL 3			GEL 3
		STANDARD			STANDARD
		<b>SQUEEGEE</b>			<b>SQUEEGEE</b>
		75-90-75			65-90-65
COLOUR 3 - RECIPE	RATIO	SCREEN	COLOUR 4 - RECIPE	RATIO	SCREEN
HYDRA COOL BASE	94	120/305			
AQUATINT PIGMENT RED C	6	GEL 3			
		STANDARD			
		<b>SQUEEGEE</b>			<b>SQUEEGEE</b>
		65-90-65			

PRINTER PARAMETERS	PRINTING PROCEDURE		SUITABLE ADDITIVES
DRYER TEMPERATURE	160°C - 320°F	1 PRINT DOUBLE STROKE - FLASH	<b>HYDRA REDUCER 120:</b> To reduce viscosity, just add 3% of HYDRA REDUCER 120. <b>Formaldehyde and phthalate free.</b>
CURING TIME	2 MIN	2 PRINT DOUBLE STROKE - FLASH	<b>HYDRACRYL RETARDER:</b> Retarder designed to further improve screen stability of HYDRA, HYDRACRYL, GEO and PERFETTO. Add 3-5% of HYDRACRYL RETARDER to the inks. <b>Formaldehyde free and phthalate free.</b>
SQUEEGEE ANGLE	25°	3 PRINT DOUBLE STROKE - CURE	<b>HYDRA JET REDUCER:</b> Viscosity reducer; add 1-3% to the ink. To use only when the ink viscosity is extremely thick. <b>Formaldehyde and phthalate free.</b>
PRINTING SPEED	MEDIUM		<b>UNIVERSAL FIX:</b> Fixer, add 3% to further improve washing resistance. <b>Formaldehyde and phthalate free.</b>
SCREEN CLEAN UP			
USE WATER			
COMMENTS			



HYDRA COOL BASE - 07  
APRIL 2015

